

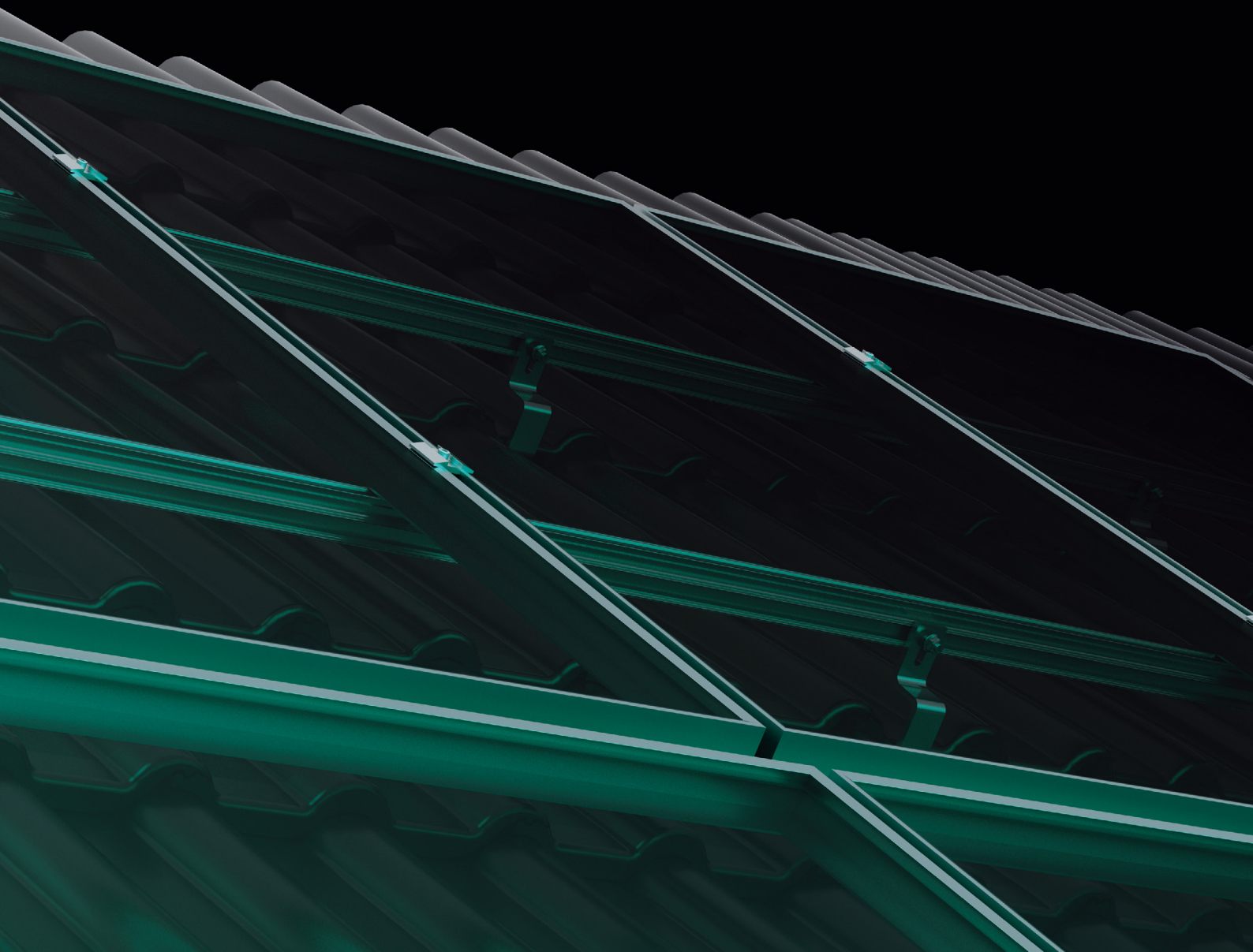


mounting  
systems

more than a system.  
it's a brand.

ProLine

Residential & Commercial – Solar Parks & Utility-Scale



- mounting systems gmbh – since 1993
- Residential & Commercial: For the Roof and Commercial Sector
- Solar Parks & Utility-Scale: For All Ground Mount Projects



mounting  
systems

# Content

|                            |           |
|----------------------------|-----------|
| <b>1. About Us</b>         | <b>4</b>  |
| • History                  |           |
| • Mission                  |           |
| • Vision                   |           |
| • Locations                |           |
| • Made in germany          |           |
| <b>2. Service</b>          | <b>10</b> |
| • Consultation             |           |
| • Trainings                |           |
| • Planning                 |           |
| • Logistics                |           |
| • Sales Marketing          |           |
| <b>3. Planning Tools</b>   | <b>14</b> |
| • Digital Showroom         |           |
| • Online Configurator      |           |
| • Installation Videos      |           |
| <b>4. Rails</b>            | <b>16</b> |
| • Base Rails               |           |
| • Trapezoidal Sheet Rails  |           |
| • Clickstone-Technology    |           |
| <b>5. Product Overview</b> | <b>24</b> |

## Send Us a Message

You would like to learn more about us? We are happy to provide you with an overview of our products and services by phone, in writing or in person.

[info-de@mounting-systems.com](mailto:info-de@mounting-systems.com)

# About Us

## > History

### **Securely Financed, 9 GWp Installed Capacity in over 8.000 Projects and 70 Countries**

As a Zech Group and Northwest Industry Group (NWI) company, we provide long-term stability in every project, guaranteed also by our robust installation systems. Our PV systems function smoothly for decades under extreme weather conditions to ensure project profitability. From solar farms and rooftop systems to our carports, Mounting Systems stands for stability, experience and innovation.

since 1993.



## > Mission

### **Our Installation Systems and Services Facilitate the Daily Work of Wholesalers, EPCs and Installers**

For almost three decades we have been the reliable partner for wholesalers, installers and small EPCs. We develop and produce innovative, easy-to-install and durable PV structures and offer you a comprehensive product and customer service.

We are privileged to make a positive contribution to the energy transition towards renewable energies and a green future. For us, sustainability means not only durable and long-lasting products, but also environmental awareness and responsibility for the world of tomorrow.

Everything we do is geared towards the goal of minimizing our ecological footprint and offering only state-of-the-art photovoltaic solutions. This is achieved through optimized production processes and efficient quality and supply chain management. As an ISO-certified company, it is particularly important for us to comply with environmental requirements and regulations.





## > Vision

### **Our Vision Is to Provide Safety on the Roofs of the World**

As a manufacturer of PV mounting systems, the goal is to make sustainable energy sources more accessible while ensuring that the installation and use of solar systems is safe and reliable. We do this by focusing on innovative and durable solutions that meet the needs of our customers.

Our products are designed to ensure reliable and secure mounting of photovoltaic systems on roofs, maximizing energy production from sunlight. They meet the highest safety standards and offers solutions for every conceivable situation.

The systems are made of high-quality materials and are designed to withstand the harshest weather conditions and loads. In addition, the company is continuously developing and improving its products to maximize safety and efficiency. With passion and commitment to renewable energy, Mounting Systems sets the standard in the PV mounting industry.

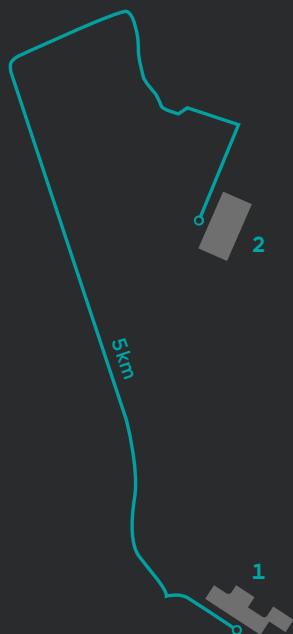
Mounting Systems GmbH has an experienced team of experts to help customers select the most suitable system for their specific needs and assist with system design and installation. With our wide range of products and services, Mounting Systems is a reliable partner for anyone looking for a safe and effective PV mounting solution.

## > Locations

Are you looking for cooperation opportunities or would you like to make an appointment? Then please get in touch with our headquarters or directly with our contact persons.

### Rangsdorf I <sup>1</sup> (Headquarters & Production)

Mounting Systems GmbH  
Mittenwalder Straße 9a  
15834 Rangsdorf, Germany



### Rangsdorf II <sup>2</sup> (Production & Warehouse)

Mounting Systems GmbH  
Maulbeerstraße 13  
15834 Rangsdorf

## > Solar Parks & Utility-Scale



### Office Berlin (Solar Parks & Utility-Scale)

Mounting Systems GmbH  
Ella-Barowsky-Straße 45-47  
10829 Berlin, Germany

#### We Will Be Glad to Help You With All Questions Concerning Solar Parks and Large Solar Projects

Do you have questions about our ground-mounted fixed-tilt or tracker systems, PV projects or are you looking for cooperation opportunities and would you like to make an appointment? Then please feel free to contact our office in Berlin.

[projects@mounting-systems.com](mailto:projects@mounting-systems.com)

---

## > Residential & Commercial



### Office Cologne (Sales)

Mounting Systems GmbH  
Rolshover Straße 524  
51105 Cologne, Germany

#### Our Drive Leads to Our Customers' Success

Do you have questions about our rooftop systems, solar carports or small-scale ground-mounted systems? Are you looking for cooperation opportunities or would you like to make an appointment? Then please get in touch with our headquarters or directly with our contact persons.

[info-de@mounting-systems.com](mailto:info-de@mounting-systems.com)



**made in  
germany**

## **State-of-the-Art Machinery and Fully Automated Storage System**

Our experience and expertise is complemented by the most innovative technology and machinery. A fully automated in-house storage solution ensures maximum flexibility, efficiency and availability.

› Made in Germany

## **Certified Product Quality**

**Mounting Systems Gmbh Is One of the World's Largest Manufacturers of Substructure Constructions for Photovoltaic Systems. For Over 30 Years, We Have Stood for Quality Products "Made in Germany".**

Our products are designed in-house with the highest standards of customer satisfaction, quality and service, and are manufactured with continuous further development in our factory in Rangsdorf. Because quality also means being on site during development and production to accompany the processes step by step.

Our PV mounting systems, produced according to German standards, enjoy a unique and excellent image, both in Germany and with our international customers and trading partners.









# Services

## > Consultation

### **We Are Available For You**

Whether it is simply a matter of choosing the right roof hooks, you need help with the planning of a project or our sales marketing team can support you in marketing the products: our internal service staff is looking forward to your enquiries. The guarantees on our PV mounting systems mean long-term security for you. Our trade partners, installers and planning offices value our high-performance service and our guarantees far beyond national borders and continents.

## > Trainings

### **With Passion and Care We Strive for Safety on the Roofs of the World**

Visit us in our Rangsdorf and Cologne locations or take part in our online training courses and learn how you can set up our systems even faster.

We offer our customers, installers and employees of wholesalers regular trainings in the use of our products. In our training room in Rangsdorf, we have set up our new PV mounting systems in an optimal test environment and can demonstrate the simple assembly and all details. This saves you and your employees time and money. Of course, all training courses are free of charge.

## > Logistics

### **International Supply Chain Through Worldwide Transport Network**

Our reliable and efficient logistics support your entire project. Our material-optimised packaging solutions with partially pre-assembled parts minimise freight costs. We show the delivery costs as soon as the order is confirmed. We guarantee transport safety, punctuality and, if required, are happy to accommodate customer-specific packaging solutions as well as desired deadlines. Our logistics services:

#### **Global Delivery**

The delivery of our PV mounting systems to over 70 countries runs smoothly and is extremely uncomplicated for you thanks to our worldwide transport network.

#### **Rapid Availability**

Thanks to state-of-the-art warehousing in our fully automated storage system, many products can be delivered directly from the shelf and are therefore quickly available for you.

#### **Customs Clearance**

As an approved exporter, we also offer complete customs clearance.

#### **Supplier Code of Conduct**

The Supplier Code of Conduct creates a clear framework of values and principles that support and underpin the meaning of fair competition and a principled approach to doing business.

## Design Optimization

Our technicians ensure that the optimal combination of products is considered for each project. To guarantee a strong and cost-effective solution, we regularly optimise our components.

## Static Calculations

We have both a highly detailed design tool that can be used on any roof project, but also a highly skilled team of structural engineers who can perform more in-depth structural calculations. This can be for a special project in a difficult location, a completely customised solution with a combination of different components or even a project with a customised fixing/third party fixation.

## Geotechnical Investigations

For any ground installation project, we can offer the services of one of our geotechnical partners. Geotechnical investigations are very important in larger projects as they provide us with the information we need to design the system. During the investigation, several physical samples of the soil are taken to visually examine the structure of the soil. Based on these results, we optimise the foundations for the system

## Analysis of Corrosion & Wind and Snow Loads

The first step in any project is to calculate the wind and snow loads for the site. This crucial step gives us the information we need to ensure that the system has the correct ballasting, number of fixings and key components to withstand these loads. With our extensive portfolio of components, we are always able to offer a solution, no matter how high the loads are for your project. Corrosion is a problem that can even affect aluminium through galvanic and atmospheric corrosion. If you have a project in a highly corrosive environment, we can provide custom anodised solutions that offer the highest level of protection against corrosion. In certain cases, the corrosiveness of the soil can be measured so that we can apply the correct amount of galvanising to our driven posts to ensure that their strength will withstand corrosion for the life of the system.



## > Planning

### We Plan Every Solar System

Taking into consideration the customer and projectspecific requirements, we approach each project with full dedication and professionalism. From the initial project enquiry to the structural analysis and project implementation, we ensure that our engineers and technicians develop the best possible solution for you.

Our assembly systems are highly adaptable and can be excellently customised to projectspecific requirements. The layout, type and fixation of the module are always analysed based your project.

## > Sales Marketing

Our sales marketing team is there for you: if required, also supports you in the marketing of the products. The focus is on high customer satisfaction and lasting customer loyalty. Unique service that convinces and meets your expectations!

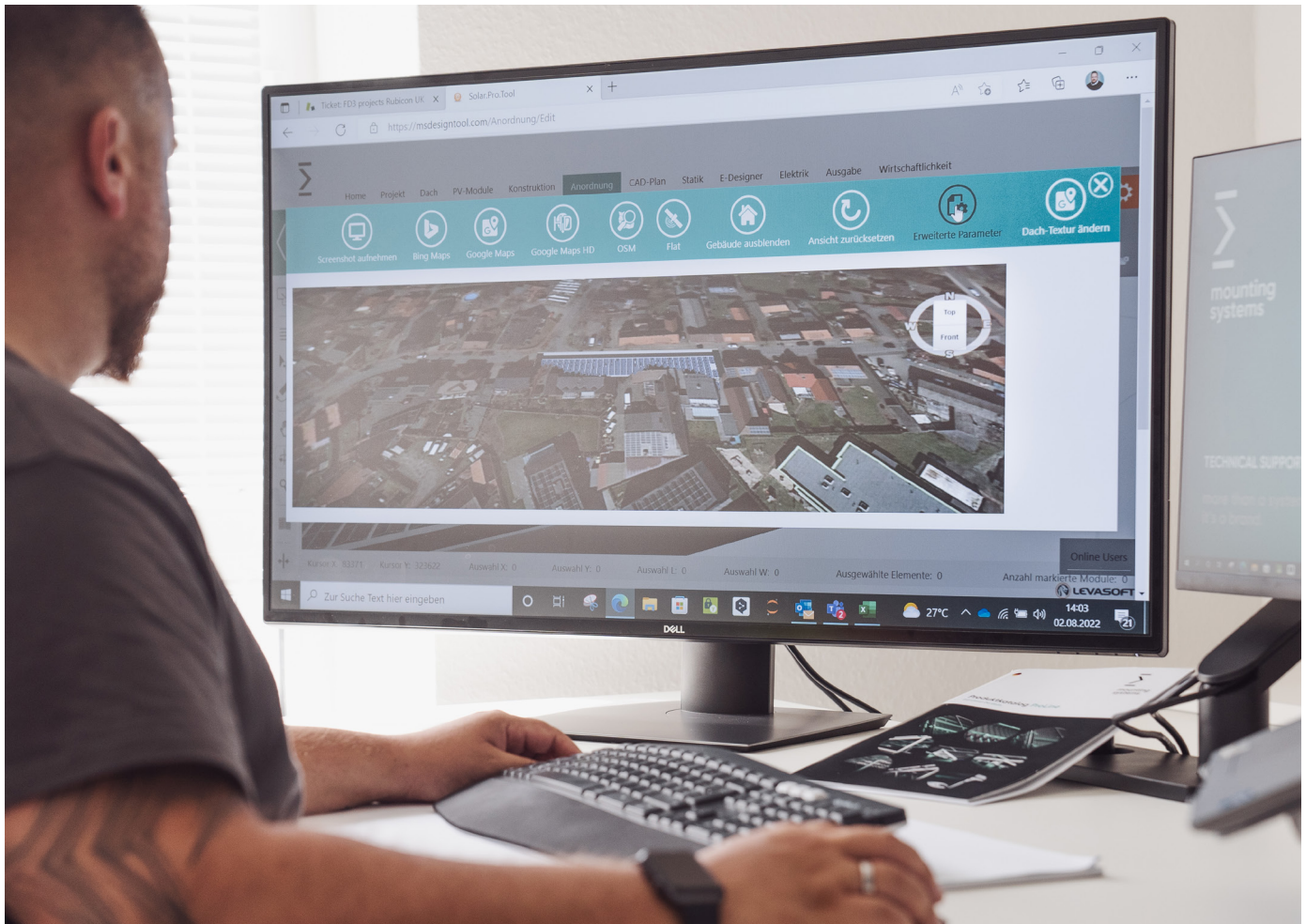
Due to our installation manuals, we can give you a comprehensive insight into our product range. We place that our assembly instructions are to understand and clearly laid out, so that you can overview quickly and easily.

We would like to give you the opportunity to not only get to know our products theoretically, but also to experience them practically. Therefore, we offer you an effective practical training, where you can test and try out our products under professional guidance.

If you would like to get an idea of our products, we also offer sample cases. These allow you to experience and test our products up close. We also create individual product renderings to ensure a realistic presentation.







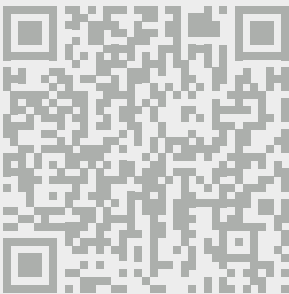
# Planning Tools

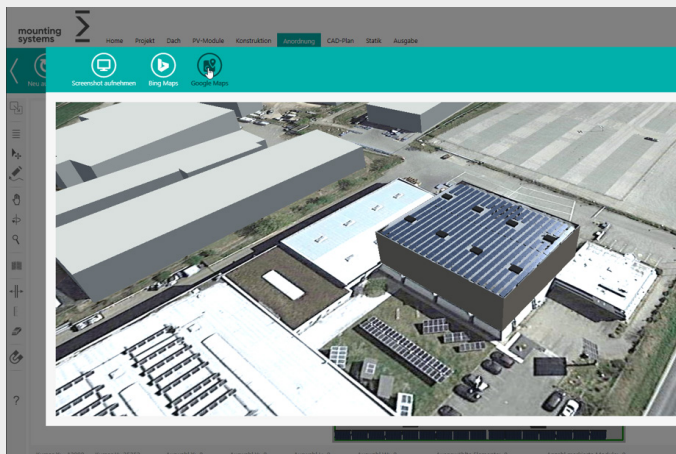
Check with our design software the material for standard installations can be compiled in minutes, including testable static verification for the respective location based on the applicable standards.

> EasyTool

## Your Project Design in Less Than 5 Minutes.

- Available in 12 languages
- Completely free for customers and installers
- Access to an extensive module database
- Planning of your project within 5 minutes
- Simple drawing of the building or roof area via Google Maps
- Wind and snow loads according to Eurocode
- Our service technicians can access all projects to provide you with the best possible support
- Consideration of country-specific requirements





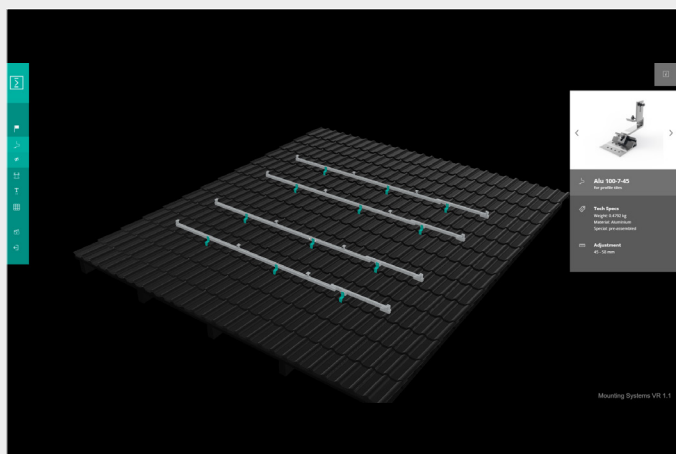
## Online Configurator (EasyTool)

With the design tool, you or your customers have the possibility to plan a desired substructure for a building. With the design software, roofs can be defined with various properties, such as roof pitch, roof covering or even interfering surfaces. The module fields can be freely arranged on the roof with the desired fastening system.



## Installations Videos

On our YouTube channel you will find videos on the installation of our products. Our technicians explain step-by-step all important aspects of the installation.



## Digital Showroom

Whether from a smartphone, tablet or desktop: Gain an in-depth understanding of our assembly systems thanks to the interactive three-dimensional representations, the animated exploded views and the numerous detailed photographs.



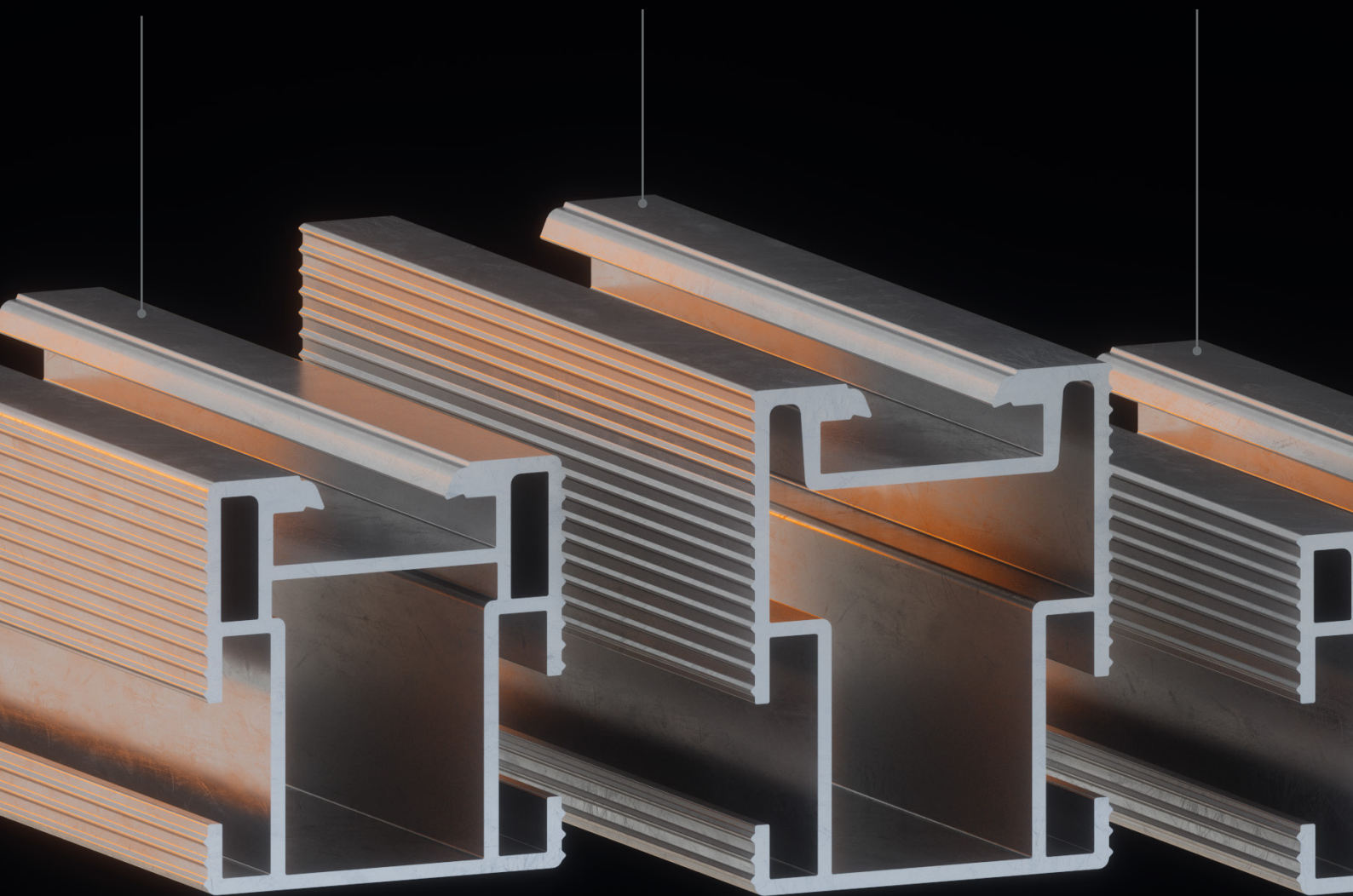
# Rails

The first number in the designation of the rail profiles stands for the moment of inertia **cm<sup>4</sup>** and the second number describes the height **mm** of the rail.

6/40

10/48

4/35

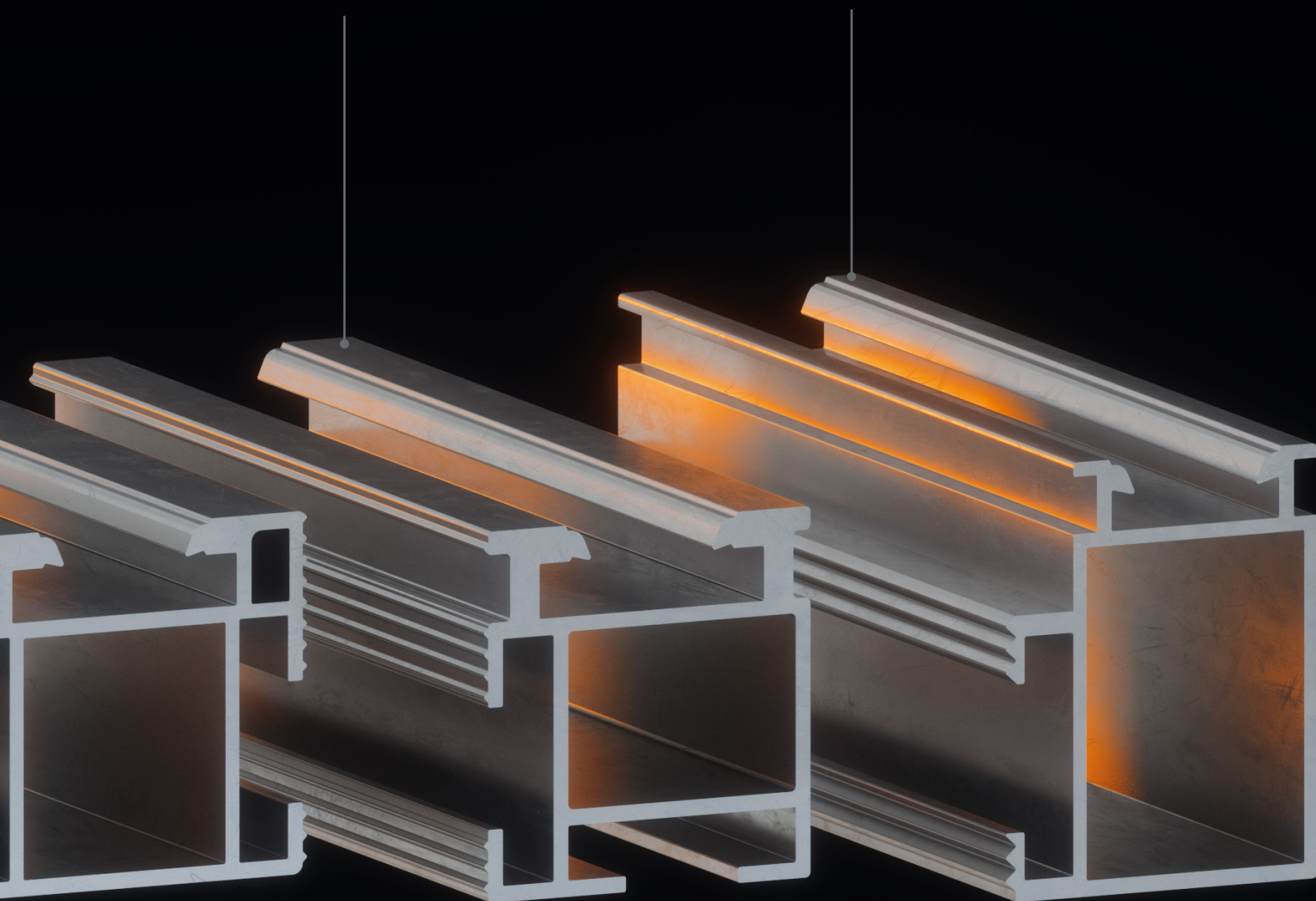




mounting  
systems

4/35 CCS

5/41

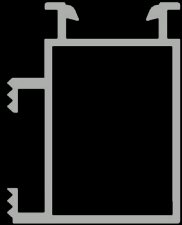


## > Base Rails



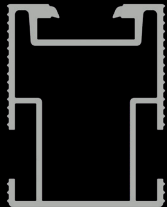
### T-head Bolt with Lock Nut

Fastening the base rails to the roof hooks and hanger bolts.



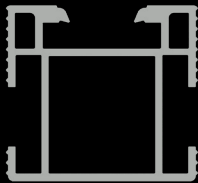
### 5/41

The one-sided fastening channel is material and cost saving and makes the 5/41 rail the most efficient rail of all.



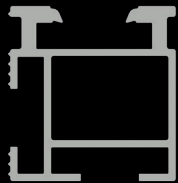
### 10/48

The 48 mm high rail can be extended for heavier loads and provides support in all zones.



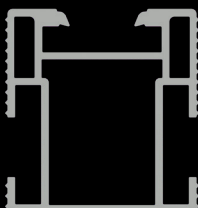
### 4/35

Our smallest standard rail is known for a simple module field layout installation.



### 4/35 CCS

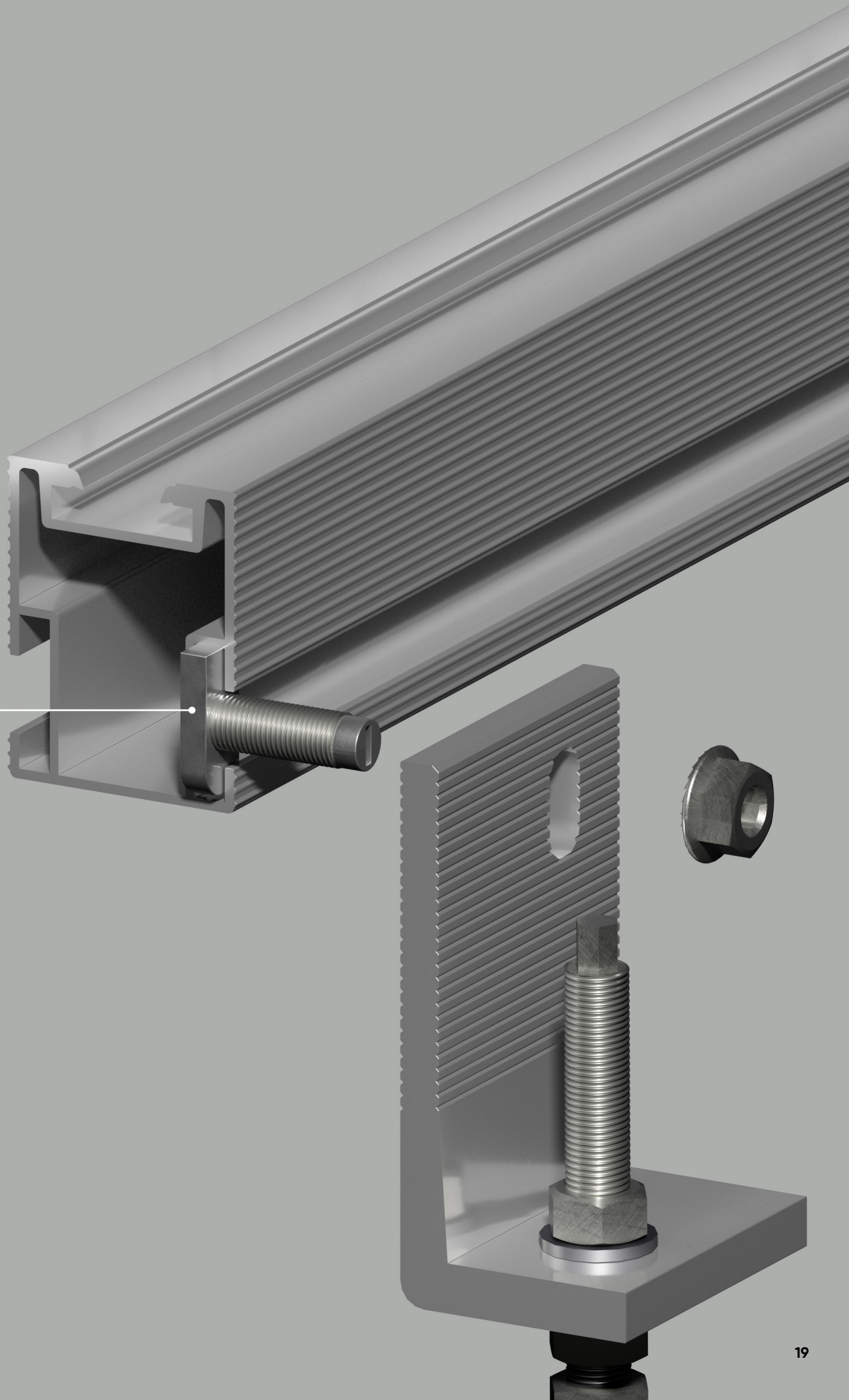
The 4/35 CCS rail has an additional fastening channel and is specially suitable for the stainless steel plain tile and slate roof hooks.



### 6/40

With a moment of inertia of 6cm<sup>4</sup>, the 6/40 rail is particularly stable for its small size.

T-head Bolt





## > Trapezoidal Sheet Rails



### Thin Sheet Srew TX30

Fixation for all trapezoidal rails.



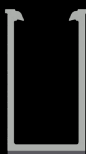
#### 1/15

The standard rail for landscape mounting of the modules.



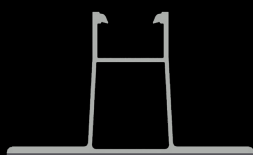
#### 1/16

The 30 mm longer rail offers more clamping surface for larger modules when mounted landscape.



#### 4/40

The raised 4/40 rail provides more space under the modules and ensures better air circulation. Optimised for hot places.



#### 5/40

The standard rail for portrait mounting of the modules.



1/15 Rail

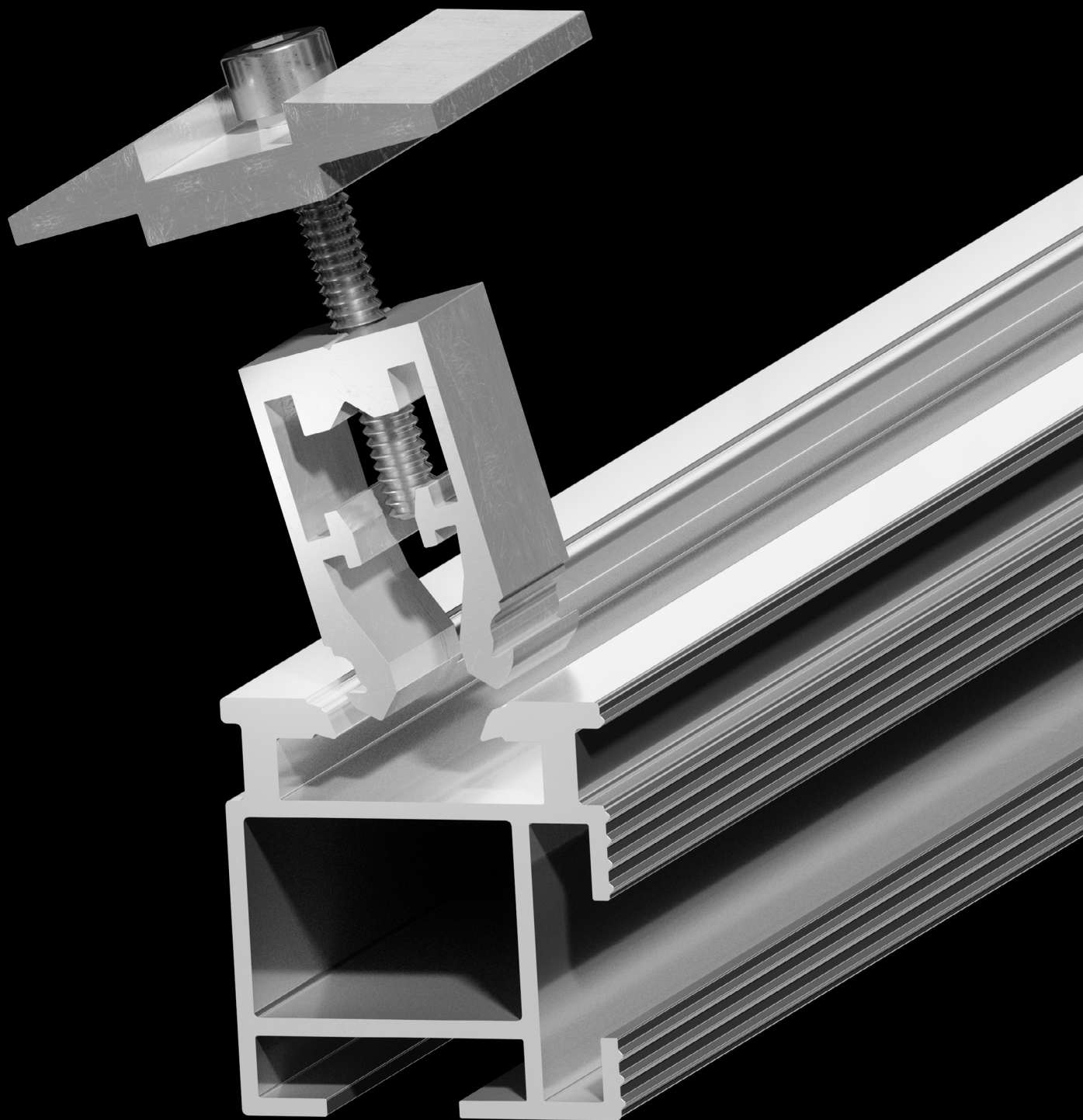
1/16 Rail

4/40 Rail

Trapeze Fastener

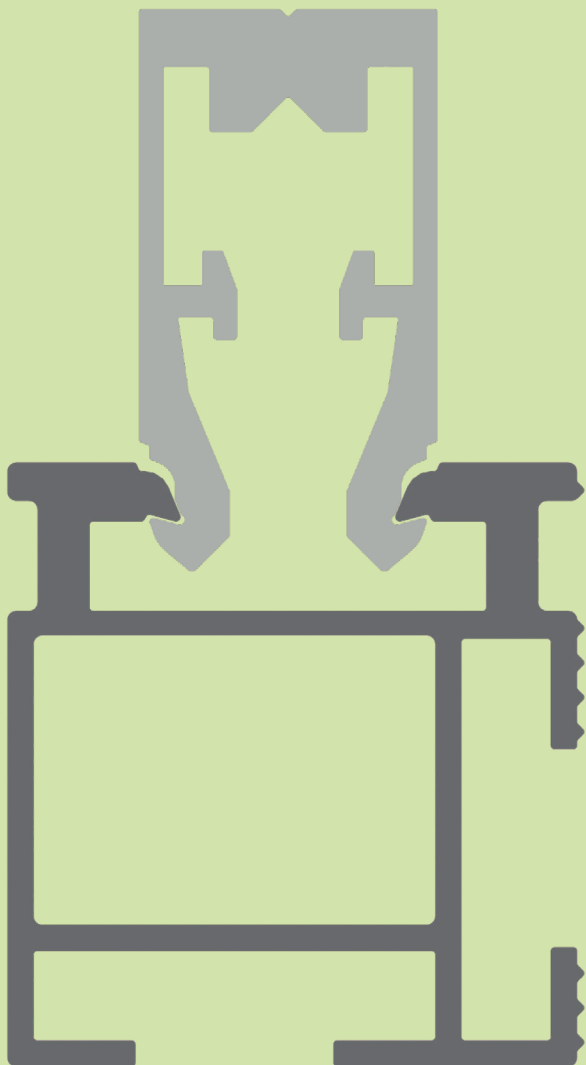
1/22 Rail

5/40 Rail





# The Clickstone Technology Offers an Innovative Solution for Fixing Solar Modules.



Through its intelligent design, it allows easy and efficient installation of solar modules. These mounts have a unique internal click mechanism that allows the modules to be fixed securely and firmly without the need for additional tools or complicated mounting systems.

The Clickstone technology is characterised by its high flexibility. The mounts can be easily adapted to different solar modules, regardless of their size or shape. In addition, the system enables quick and easy disassembly if maintenance work needs to be carried out on the modules.

The brackets are made of robust materials that are highly resistant to weather conditions such as rain, wind and UV radiation. This ensures that the solar modules are securely and reliably fixed and can achieve long-term performance. Overall, Clickstone technology offers an efficient and reliable method for fixing solar modules. It simplifies installation, is flexibly adaptable and offers high resistance to environmental influences. With this innovative technology, solar modules can be safely and effectively erected to generate renewable energy and make a positive contribution to environmental protection.

# PV-Systems Overview



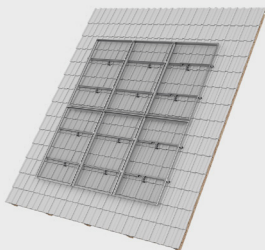
## Our Rooftop, Flat-Roof Systems, Ground Mounting Kits and Solar-Carports

On the following pages you will find all the technical data and details about our systems.

Subject to technical changes.

On our website you will find all information about the technical data as well as warranty conditions and other documents.

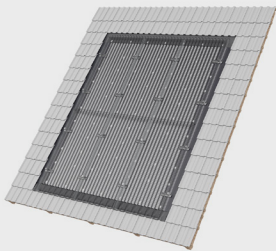
> Pitched-Roof  
**Pitched**



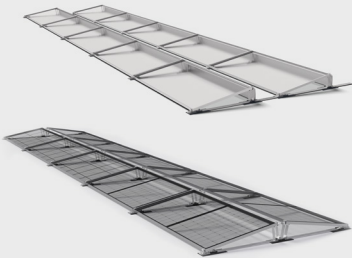
> Trapezoidal Sheet  
**Trapeze**



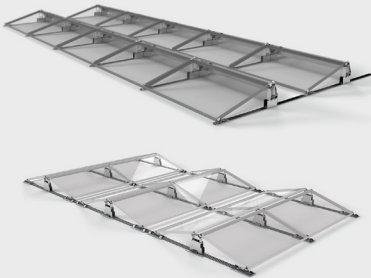
> In-Roof  
**Infix**



> Flat-Roof  
**LightX-S / -EW**



> Flat-Roof  
**Light-S / -EW**



> Flat-Roof  
**FD3-S / -EW**



> Flat-Roof  
**Trifix**



> Flat-Roof  
**Ramp System**



> Solar-Carport Residential

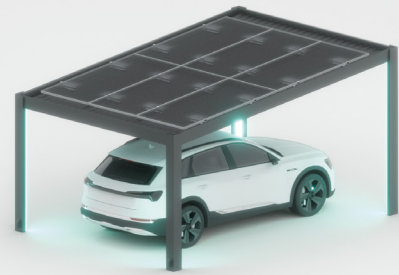
### E-Port Home

Single & Double



> Solar-Carport Residential

### E-Port Home Premium



> Solar-Carport Industrial

### E-Port FIXX



> Solar-Carport Industrial

### E-Port Vario S1



> Solar-Carport Industrial

### E-Port Line



> Ground-Mount

### 1-Post



> Ground-Mount

### 2-Post Steel



# Products and Services

## Worldwide

### Our Service for You:

#### Consultation

We Are Available For You

Free Service for Our Partners

Creation of Marketing Packages

Provision of Individual Marketing Assets

#### Webinars & Trainings

Get to Know Our Products in Effective  
& Practical Training Sessions

Wide Range of Free Services

Optimal Test Environment in Our Training Rooms

Product & Installation Training

#### Planing

We Plan Every Roof

Design Optimisation

Static Calculations

Geotechnical Investigations

Analysis of Ballast, Wind & Snow Loads

#### Logistics

International Supply Chain Through  
Worldwide Transport Network

Global Delivery

Rapid Availability

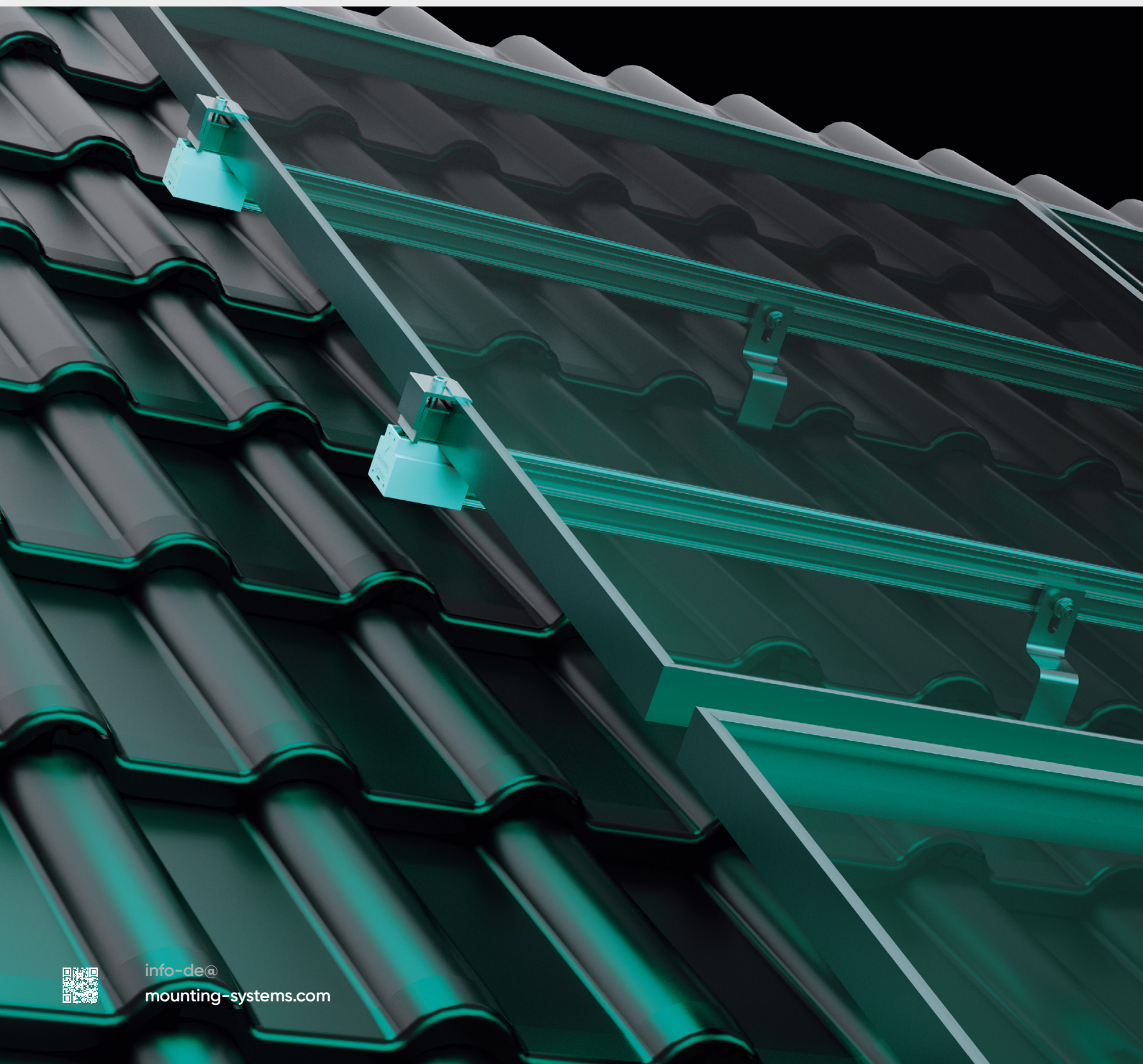
Customs Clearance

Supplier Code of Conduct





made in germany  

info-de@  
mounting-systems.com